



Pakistan

| | |
|---|---|
| Project Title | Sustainable Land Management Programme to Combat Desertification in Pakistan |
| Expected Outcome(s): <i>(Those linked to the project and extracted from the CPAP)</i> | Vulnerable populations benefit from improved sustainable environmental management practices, including climate change mitigation and adaptation |
| Project Output(s): <i>(Those that will result from the project and extracted from the CPAP)</i> | <p>Output 1: Strong enabling environment at national and provincial levels supports up-scaling of SLM practices;</p> <p>Output 2: Effective, targeted and adaptive implementation of SLM Land Use Planning & Decision Support System;</p> <p>Output 3: On-the-ground implementation of climate-resilient SLM activities is up-scaled across landscapes.</p> |
| Implementing Partner: | Ministry of Climate Change |
| Responsible Parties/partners: | Provincial Planning & Development Depts. [Punjab, Sindh, Khyber Pakhtunkhwa & Balochistan], UNDP |

| | |
|-----------------------------|---------------|
| Programme Period: 2015-2020 | |
| Atlas ID: 00075848 | |
| Project ID: 00087529 | |
| Start date: | August 2015 |
| End Date | August 2020 |
| PAC Meeting: | |
| Management Arrangements: | NIM |
| Project Board Meeting Date: | Indicate date |

| | |
|------------------------------|---------------|
| 2016 AWP budget: | USD 2,193,728 |
| Total resources required | USD 2,193,728 |
| Allocated resources: | USD 2,193,728 |
| • Regular (TRAC) | USD 150,000 |
| TRAC | |
| • Other: Go Pak + Provinces: | 850,000 |
| • Donor/GEF | USD 993,728 |
| Unfunded budget: | NA |

Agreed by [Implementing Partner - NPD]: [Signature] 8/3/2016

Agreed by UNDP (CD / DCD-P): [Signature] Date: 29/1/16

TRACY VIENINGS
Deputy Country Director (Programme)
United Nations Development Programme

I. ANNUAL WORK PLAN

| | Activity Result | 1.1.a Land Use Policy framework structure for the provinces prepared and NAP studies and reports conducted | X | X | X | X | X | 13,000 |
|--|--|--|---|---|---|---|---|--------|
| <p>Output 1: Strong enabling environment at national and provincial levels supports up-scaling of SLM practices</p> <p>Indicators:</p> <p>1.1 Extent to which provincial land use policies effectively mainstream and implement SLM principles based on NAP</p> <p>Scale:</p> <ol style="list-style-type: none"> 1. Not adequately: (up to 25%) 2. Very partially: (26%-50%) 3. Partially: (51%-75%) 4. Largely: (75% and above) | <p>1.1.1a 4 provincial Land Use Policy framework/structure prepared</p> | | | | | | <p>Consultant for documentation and Printing publishing Workshops and meetings endorsement (72100) - 8500 (74200) - 1000 (75700) - 1500 (71600) - 2000</p> | 13,000 |
| <p>1.2 Extent to which key sectoral policies, especially agriculture and forests, address desertification issues based on SLM principles</p> <p>Scale:</p> <ol style="list-style-type: none"> 1. Not adequately: (up to 25%) 2. Very partially: (26%-50%) 3. Partially: (51%-75%) 4. Largely: (75% and above) | <p>Action 1.1.1b: A study to develop a strategy paper / guidelines for introduction of Payment for Ecosystem Services (PES) concept in Pakistan</p> | | | | | | <p>consulting services Consultation meetings/workshops with stakeholders for the guidelines conducted (72100) - 9000 (74200) - 1000 (75700) - 1500 (71600) - 2000</p> | 13,500 |
| <p>1.3 Extent to which National & Provincial</p> | | | | | | | | |

| <p><i>Desertification Control Cells are functional</i></p> <p>Scale:</p> <ol style="list-style-type: none"> No Desertification Control Cells at national or provincial level Desertification Control Cells established, but are not functional Desertification Control Cells established, and are partially functional Desertification Control Cells established, and are significantly functional Desertification Control Cells established, and are fully functional <p>1.4 Skills for up-scaling SLM enhanced through institutionalization of multi-tiered capacity building programme</p> <p>Scale:</p> <ol style="list-style-type: none"> Not adequately: (up to 25%) Very partially: (26%-50%) Partially: (51%-75%) Largely: (75% and above) <p>1.5: Up-scaling is enhanced through a knowledge management and outreach programme for SLM</p> <p>Scale:</p> <ol style="list-style-type: none"> Not adequately: (up to 25%) Very partially: (26%-50%) Partially: (51%-75%) | <p>Action 1.1.1.c: Assessment study of NAP implementation at federal and provincial levels</p> | | X | X | X | | CCD/NCU | GEF | <p>consulting services</p> <p>Consultation meetings/workshops with stakeholders for the guidelines conducted (72100) - 8000 (75700) - 1000 (71600) - 1000</p> <p>meetings arrangements (75700)</p> | 10,000 |
|--|---|---|---|---|---|--|---------|-----|--|--------|
| | <p>Action 1.1.1.d: facilitating to organise minimum 2 meetings of the National Coordination Committee to Combat Desertification (NCC) of MoCC as per NAP</p> | X | X | X | X | | CCD/NCU | GEF | | 1,500 |
| | <p>Action 1.1.1.e Annual 7th UNCCD national report prepared</p> | X | X | X | X | | CCD/NCU | GEF | <p>consulting services</p> <p>Consultation / validation meetings/workshops, printing, dissemination (72100) - 10,000 (74200) - 1500 (75700) - 2000</p> | 13,500 |
| | <p>Activity Result 1.2.1 Guidelines and implementation strategy framework for sectoral policies addressing LD issues and SLM principles developed</p> | | | | | | | | | |

| | | | | | | | | | |
|--|--|---|---|---|--|---------|-----|--|--------|
| <p>4. Largely: (75% and above)</p> <p>Baseline:</p> <p>1.1: Scale item 1: not adequately [Description.: [No land use policies exist]</p> <p>1.2: Scale item 1: not adequately [Description.: LD issues and SLM principles not integrated in provincial sectoral policies or frameworks]</p> <p>1.3: Scale item 1: No Desertification Control Cells at national or provincial level [Description.: National & provincial coordination units established during SLMP Phase I]</p> <p>1.4: Scale item 1: not adequately Description: [No up scaling of SLM through institutionalization of multi-tiered capacity building programme]</p> <p>1.5 Scale Item 1- Not adequately: (up to 25%) Descry: [No communication and outreach strategy/plan, knowledge management activity or advocacy material developed, No SLM networks established]</p> | <p>Action 1.2.1 a: 1 set of Guidelines and implementation strategy for mainstreaming SLM in national and provincial policy legal and sectoral frameworks</p> | X | X | X | | UNDP | GEF | consulting services Consultation / validation meetings/ workshops, printing dissemination (72100) - 17,500 (74200) - 2000 (75700) - 4300 (71600) - 4000 | 27,800 |
| | <p>Activity/Result 3.1: National and Four Provincial Coordination Units converted into respective Desertification Control Cells</p> | X | x | | | CCD/NCU | GOP | Staff remuneration and other arrangements | 6,000 |
| | <p>Action 1.3.1a: Staff hired and placed at National and Four Provincial Coordination Units for respective Desertification Control Cells</p> | X | | | | | | | |
| | <p>Activity/Result 4.1: Capacity of In-service staff and village level master trainers and community activists in SLM built through training programmes</p> <p>Action 1.4.1 a: Two Field-based training manuals on SLM updated / developed for sustainable harvesting methods and Efficient use of water resources</p> | X | X | X | | CCD/NCU | GEF | Consultation services Manual development (72100) - 8000 (74200) - 3700 (75700) - 2000 (71600) - 1000 | 14,700 |

AN

AND

| | | | | | | | | | |
|--|--|----------|----------|----------|----------|----------------|-----------------|--|--------------------------|
| <p>Targets:</p> <p>1.1: Scale item 1: not adequately [Description.: 4 LUP framework/structure, guidelines and implementation strategy/framework prepared] and [Assessment study of NAP implementation, Activation of NCC of MoCC, 7th UNCCD national report prepared]</p> | <p>Action 1.4.1 b : Training of 40 (including 5 from ADP Sind) professionals covering federal and provincial levels conducted</p> | <p>X</p> | <p>X</p> | <p>X</p> | <p></p> | <p>CCD/NCU</p> | <p>GEF Sind</p> | <p>Contractual services content development certification developed and finalized (72100) - 2000 (75700) - 4000 (71600) - 14,000</p> | <p>20,000 4,000</p> |
| <p>1.2: Scale item 1: not adequately [description.: framework/structure, guidelines and implementation strategy/roadmap to mainstream LD issues and SLM principles prepared]</p> | <p>Action 1.4.1 c : Trainings of district level for a three day period respectively in target districts completed</p> | <p>X</p> | <p>X</p> | <p>X</p> | <p></p> | <p>CCD/NCU</p> | <p>GEF</p> | <p>Contractual services Consultations in target districts Visit, and selection of partner institutions (72100) - 8000 (74200) - 1300 (75700) - 4000 (71600) - 2000</p> | <p>15,300</p> |
| <p>1.3: Scale item 2: Very partially [One National and Four Provincial Coordination Units converted into respective Desertification Control Cells established by Yr 1]</p> | <p>Action 1.4.1 d: Field Demos (ADP Sind)</p> | <p></p> | <p></p> | <p></p> | <p></p> | <p>Sind</p> | <p>Sind</p> | <p></p> | <p>4,000</p> |
| <p>1.4 : Scale item 2: Very partially Description: [Strategic SLM training program developed and multi-tiered capacity building activities conducted for 35 Professionals / managers 350 district village level master trainers – with in country and regional exchange visits]</p> | <p>Activity Results: Comprehensive strategic communications outreach and knowledge management strategy material developed and implemented</p> <p>Action 1.5.1a communications strategy content finalized</p> | <p>X</p> | <p>X</p> | <p>X</p> | <p>X</p> | <p>CCD/NCU</p> | <p>GEF</p> | <p>Consultant Services (72100) – 10,000 (71600) - 2000</p> | <p>12,000</p> |
| <p>1.5: Scale item: 2 Very partially Description: [Communication strategy, advocacy material developed, knowledge management</p> | <p>Action 1.5.1 b SLM corporate identity established</p> | <p>X</p> | <p></p> | <p></p> | <p></p> | <p>CCD/NCU</p> | <p>GEF</p> | <p>Hiring of firm Printing and production of SLM branding material</p> | <p>20,000</p> |




| | | | | | | | | | | | |
|---|---|--|---|--|--|---|--|---------|-----------------------------------|---|--------|
| <i>activity conducted and SLM network established</i> | | | | | | | | | | | |
| | | | | | | | | | (72100) - 6000 (74200) - 14000 | | |
| Action 1.5.1c short documentary film on SLM Importance of SLM | | | X | | | | | CCD/NCU | GEF | Hiring of Firm (pre and post production) (72100) - 8000 (71600) - 2000 | 10,000 |
| Action 1.5.1d SLM human interest stories | | | X | | | X | | CCD/NCU | GEF | Case studies Travel (71600) | 4,000 |
| Action 1.5.1e SLM Information System (SLM IS) | X | | X | | | X | | CCD/NCU | GEF | A web-based portal will be established at national level (72100) | 2,000 |
| Action 1.5.1f Two Awareness raising workshop / seminar conducted at district level in two districts | | | X | | | X | | CCD/NCU | GEF | Consultation, travel, meetings, workshops, material (75700) 1500 (72100) 2000 (71600) 1500 | 5,000 |
| Action 1.5.1g Field Demonstration day conducted at district level | | | X | | | | | CCD/NCU | GEF | Material for demo Facilitation (74200) 1500 (72100) 3500 (71600) 2000 | 7,000 |
| Action 1.5.1h students (4) from universities and research institutions engaged for documentation and capacity building | | | X | | | X | | CCD/NCU | GEF | Engagement of students and universities with respect to SLM subjects for field work (72100) | 4,000 |

| | | | | | | | | | | | |
|--|---|--|---|---|---|---|---|---|---|----------|---------|
| Output 2 Effective, targeted and adaptive implementation of SLM Land Use Planning & Decision Support System; | Activity Result 2.1.1.1: GIS-based participatory district and village land use plans developed and being implemented | X | X | X | X | X | X | X | Consultant Services (75700) 4000 (71600) 3600 | 7,600 | |
| | | Action 1.5.1.i: National SLM Network Launched in four cities and Follow up meetings and activities of the network conducted | | | | | | | | GEF | |
| | | Action 1.5.1.j Better SLM outreach via knowledge products: brochures, leaflets, fact sheets and a booklet | | X | X | | | | | GEF | 19,000 |
| | | Action 1.5.1.k Continuation of study for documentation of best practices on SLM | X | | X | | | | | GEF | 6,000 |
| | | Action 1.5.1.l Continuation of study for documentation of indigenous knowledge on SLM | X | | X | | | | | GEF | 6,000 |
| | | | | | | | | | | | |
| | | | | | | | | | | GEF | 256,900 |
| | | | | | | | | | | ADP Sind | 4,000 |
| | | | | | | | | | | GOP | 6,000 |
| | | Total Output 1 | | | | | | | | | |

7

| | | | | | | | | | | |
|---|--|---|---|---|---|---|---------|-----|--|---------------|
| Indicator 2.1 Number of integrated participatory district level SLM land use plans being implemented (developed with the participation of key sectoral representatives and NGOs/CBOs) and SLM Information System Scale: 1. Not adequately: (up to 25%) 2. Very partially: (26%-50%) 3. Partially: (51%-75%) 4. Largely: (75% and above) Baseline: 2.1 Scale Item: 1 Not adequately: (up to 25%) Description : [No village or district land use plans available and No SLM information system operational] Target: 2.1 Scale item 2: Very partially: (26%-50%) Description: [twenty two Village and 1 district land use plans prepared and Geo database for SLM activities] | Action 2.1.1.a: 22 villages in one district Village and district land use plans prepared through data gathering, image processing , monitoring, digitization, GIS survey mapping, and production | X | X | X | X | X | CCD/NCU | GEF | Coordination meetings , logistics, (72800) 25,000 (71600) 5000 | 30,000 |
| | Action 2.1.1.b: Acquisition of GIS/RS Software's Action 2.1.1.c : Development and implementation of Geo Database for Ongoing activities of SLM | X | X | X | X | X | UNDP | GEF | software (72800) | 30,000 |
| | | | | | | | CCD/NCU | GEF | On ground verification (71600) | 7,000 |
| | | | | | | | | | | 67,000 |
| | | | | | | | | | | 4000 |
| | | | | | | | | | | 71,000 |
| | | | | | | | | | | |

| | | | | | | | | | | | |
|--|---|---|---|---|---|--|-------------------|---------------|--|-------------------|--|
| Output 3 On-the-ground implementation of climate-resilient SLM activities is up-scaled across landscapes | Activity/Result 3.1.1 Village and Households representation in SLM activities ensured | | | | | | | | | | |
| | Action 3.1.1 a - Establishment of 43 Community organizations (5 from ADP GOP and 10 from ADP Sind) [all provinces] | x | x | x | x | | CCD/NCU | GEF | Travel, logistics, meetings, (72100) 17,000 (71600) 6500 | 23,500 | |
| Indicator 3.1 Number of villages and households in target districts participating in SLM activities | | | | | | | | | | | |
| 3.2 Number of farms in target districts implementing soil and water conservation measures and on-farm management practices | Action 3.1.1 b SLM Demos in non project districts conducted | | | | | | CCD/NCU | GEF | Travel, Logistics, equipment, print material (75700) 1500 (71600) 3500 | 5,000 | |
| 3.3 The percentage (%) of livestock owners in target districts participating in agreements to restore degraded rangelands | Activity/Result 3.2.1 Appropriate soil and water conservation measures and on-farm management practices are up-scaled | | | | | | | | | | |
| 3.4 The % of households participating in agreements to restore degraded dry land forests | Action 3.2.1 a 39 (30 from ADP GoPb) water ponds established for rainwater harvesting for humans and / or livestock | x | x | x | x | | CCD/Provinc es | GEF Punjab | Material and labour cost (72100) 24,000 (71600) 2600 | 26,600 120,000 | |
| Baseline 3.1 63 villages 2300 households | Action 3.2.2 b - Construction of 27 Livestock water ponds in 3 districts in Balochistan Lasbela Turbat Mastung | x | x | x | x | | CCD/NCU | GEF | Material and labour cost (72100) 4,000 | 4,000 | |
| 3.2 zero | | | | | | | | | | | |
| 3.3 2 % | Action 3.2.1 c Construction and | x | x | x | x | | CCD/NCU | GEF | Material and (72100) | 9,500 | |

AN

[Handwritten signature]

| | | | | | | | | | | | | | | |
|-----|------|---|--|--|---|---|---|---|---------|-----|---|-------|---|--------|
| 3.4 | 1 % | <p>Target</p> <p>3.1- 2000 HHs in 43 villages [Punjab , Sind, Balochistan, KPK]</p> | <p>maintenance of bunds on 03 new sites in 3 districts in Balochistan [O.Saifullah, Pishin, Lasbela)</p> | | | | | | | | labour cost Travel logistics Community meetings (72100) | | | |
| 3.1 | 2000 | | | <p>Action 3.2.1 d sprinkler irrigation systems installed and drip irrigation introduced on 9 acres in two districts ha in Balochistan Mastung and Turbat</p> | x | x | x | x | x | x | CCD/NCU | GEF | Equipment and material (72100) | 4,500 |
| 3.2 | | | | <p>Action 3.2.1 e Construction of 20 embankments around the fields in two districts in KP D.I.Khan and Lakki Marwat</p> | x | x | x | x | x | x | CCD/NCU | GEF | Material labour cost Travel logistics Community meetings (72100) | 7,000 |
| 3.3 | | | | <p>Action 3.2.1f Water diversion dykes of 0.2252 million cubic feet constructed in two districts respectively in Balochistan and KP [Mastung , Lasbela, D.I.Khan, Lakki Marwat)</p> | x | x | x | x | x | x | CCD/NCU | GEF | Material labour cost Travel logistics Community meetings (72100) 10,000 (71600) 2615 | 12,615 |
| 3.4 | | | <p>Action 3.2.1 g Construction of 5 spill ways on farmlands located in two districts in KP (D I.Khan , Lakki Marwat)</p> | x | x | x | x | x | CCD/NCU | GEF | Material labour cost Travel logistics Community meetings (72100) 5500 (71600) 1000 | 6,500 | | |




| | | | | | | | |
|--|---|---|---|---------|------------|---|------------------|
| Action 3.2.1 h Establishment of 32 (25 from ADP BP) water conveyance system in 4 districts in all the provinces (Sanghar, Chakwal, Lakki Marwat and Pishin) | x | x | x | x | GEF Punjab | Material and labour cost Travel logistics Community meetings (72100) 16000 (71600) 3000 | 19,000 75,000 |
| Action 3.2.1 i Construction of gated structures on 03 critical points in sheikh Haider and other adjacent Zam areas | x | x | x | CCD/NCU | GEF | Material and labour cost Travel logistics Community meetings (72100) 9000 (71600) 250 | 9,250 |
| Action 3.2.1 j Hose-fed irrigation system established over 05 acres in one district of Balochistan [Turbat] | x | x | x | CCD/NCU | GEF | Equipment, labour, travel ,logistics, meetings (72100) 5000 | 5,000 |
| Action 3.2.1 k Shelter belts/ wind breaks over an area of 44 (30 from ADP Punjab) km in three districts KP and Punjab [D.I.Khan, Khushab , Bhakkar] | x | x | x | CCD/NCU | GEF Punjab | Equipment, labour, travel ,logistics, meetings (72100) 10,000 (71600) 1000 | 11,000 36,900 |
| Action 3.2.1 l 400km of shelterbelts established within two districts in Sind [Umerkot and Tharparkar] | x | x | x | CCD/NCU | GEF | Equipment, labour, travel ,logistics, meetings (72100) | 7,000 |
| Action 3.2.1 m Soil and water conservation structures for soil erosion control - Salaba band constructed over 07 hectares in 2 districts in Balochistan [Mastung and Q.Saifullah] | x | x | x | CCD/NCU | GEF | Material and labour cost Travel logistics Community meetings | 15,000 |

| | | | | | | | | | | | | | | |
|---|---|--|--|--|--|--|--|---|--|-----|---------|--|--|--------|
| | | | | | | | | | (72100) 13500 (71600) 1500 | | | | | |
| | x | | | | | | | x | Material and labour cost Travel and logistics Community meetings (72100) | GEF | CCD/NCU | | | 4,392 |
| Action 3.2.1 n Establishment of 02 Low-delta fruit Trees nurseries (fruit trees) established in two districts in Balochistan [Turbat and Pishin] | | | | | | | | | Material and labour cost Travel and logistics Community meetings (72100) | GEF | CCD/NCU | | | |
| | | | | | | | | | Material and labour cost Travel and logistics Community meetings (72100) | GEF | CCD/NCU | | | 7,192 |
| Action 3.2.1 o Installation of Drip/mini-bubbler irrigation systems for low delta fruit tree apricot, pomegranate, Pistachio, olive grapes) in two districts in Balochistan [Q.Saifullah and Mastung] | | | | | | | | | Equipment and material (72100) | GEF | CCD/NCU | | | 5,000 |
| Action 3.2.1 p Introduction of low delta & high yielding fruit trees apricot, pomegranate pistachio & olive over 10 Acres in one district of Balochistan [Turbat] | x | | | | | | | x | Material and labour cost Travel and logistics Community meetings (72100) | GEF | CCD/NCU | | | 3,000 |
| Action 3.2.1 q One olive extraction machine installed in one district of Balochistan where olive nurseries will be established [Turbat] | | | | | | | | | Material and labour cost Travel and logistics Community meetings (72100) | GEF | CCD/NCU | | | 10,000 |
| Action 3.2.1 r Drip irrigation system for grapes in 05 acres in two districts of Balochistan [Pishin and Q. Saifullah] | x | | | | | | | x | Material and labour cost Travel and logistics Community meetings (72100) 10,000 (71600) 2615 | GEF | CCD/NCU | | | |

AN

AND

| Activity/Result 3.3.1: Degraded rangelands are rehabilitated through improved management | x | x | x | x | x | Material and labour cost Travel logistics Community meetings (72100) 16000 (71600) 3000 | 23,066 |
|---|---|---|---|---|-----------------|---|----------------------------|
| Action 3.3.1 a Rotational Management system with farmers over 3000 acres and palatable vegetation over 15 acres established (including 500 acres RL and 5 acres palatable vegetation from ADP Sind) | x | x | x | x | GEF Sind | Material and labour cost Travel logistics Community meetings (72100) 16000 (71600) 3000 | 12,000 |
| Action 3.3.1 b Soil working and reseeded executed on 2500 including 200 acres from ADP Punjab and 300 acres from ADP Sindh) | x | x | x | x | GEF Punjab Sind | Labour and material (72100) 45000 (71600) 5490 | 50,490 16,000 16,000 |
| Action 3.3.1 c Completion of Dry afforestation/ Silvopasture on 220 acres (120 acre from ADP Punjab) | x | x | x | x | GEF Punjab | Nursery equipment and material , travel and logistics (72100) 11000 (71600) 1700 | 12,700 15,600 |
| Action 3.3.1 d Preparation of Participatory Grazing/Rangeland management plans of 6 rangelands in three districts in Punjab [Layyah, Bhakkar and Khushab] | x | x | x | x | GEF | Hiring services, Travel , logistics , meetings (72100) 10,000 (71600) 1600 | 11,600 |
| Activity/Result 3.4.1: Improved dry land forest and sand dune management restores ecosystem services, and provides new livelihood | | | | | | | |

AN

Handwritten signature

| opportunities | | | | | | | | | | | | |
|--|--|---|---|---|---|--|--|--|--|--|--|------------------------|
| Action 3.4.1a Establishment of community nurseries (30 with 10,000 plants)(3 fruit and 12 farmers nurseries from ADP Punjab and one NTFP one fruit and two farmers nurseries from ADP Sind) | | X | X | X | X | | | | | | | 24,100 |
| | | X | X | X | X | | | | | | | 35,880 |
| | | X | X | X | X | | | | | | | 10,690 |
| | | X | X | X | X | | | | | | | 15,441 |
| | | X | X | X | X | | | | | | | 14,000 (71600) 1441 |
| Action 3.4.1 b Development of two Oasis Forest & Fruit Plants in two districts in Sind [Tharparkar and Sanghar] | | X | X | X | X | | | | | | | 14,300 |
| | | X | X | X | X | | | | | | | 155,600 |
| Action 3.4.2 c Raising of Wood lots to stabilize sand dunes over 280 (250 from ADP Punjab) acres (Kana, Tamaric etc species) | | X | X | X | X | | | | | | | 11,100 |
| | | X | X | X | X | | | | | | | 7,500 |
| Action 3.4.2 d Fruit orchards with five piped irrigation system and peter engine in two districts of KP [Lakki Marwat and D.I.Khan] | | X | X | X | X | | | | | | | 365,346 |
| | | X | X | X | X | | | | | | | 469,980 |
| Action 3.4.3 e Energy Plantation over an area of 25acres in two districts in KP [Lakki Marwat and D.I.Khan] | | X | X | X | X | | | | | | | 68,690 |
| | | X | X | X | X | | | | | | | 904,016 |
| Total Output 3 | | | | | | | | | | | | |

AN

ever

| | | | | | | | | | | | | | |
|---|--------------------------|--------------------------|--------------------------|--|--|--|------------------------------|-----------|-------|-------|---------|--|--|
| Project Management | | | | | | | | | | | | | |
| Organize PSC/board meeting for progress review and approval of annual work plan | <input type="checkbox"/> | <input type="checkbox"/> | <input type="checkbox"/> | | | | CC Division | GEF | 72100 | 72100 | 3,000 | | |
| Organize annual planning and review workshop | | | <input type="checkbox"/> | | | | CC Division | GEF | 72100 | 72100 | 3,000 | | |
| Professional Staff Salaries | | | | | | | CC Division, Provinces | GEF | 71800 | 71800 | 107,000 | | |
| Professional Staff Salaries | | | | | | | CC Division, Provinces | UNDP | 71800 | 71800 | 123,000 | | |
| Support Staff Salaries | | | | | | | CC Division | GEF | 71800 | 71800 | 20,000 | | |
| Annual Audit by UNDP | | | | | | | UNDP | UNDP | | | 1,000 | | |
| Project Steering Committee meetings | | | | | | | Provinces | GEF | 72100 | 72100 | 2,000 | | |
| IT equipment | | | | | | | CC Division, Provinces | GEF | 72800 | 72800 | 11,535 | | |
| Furniture | | | | | | | CC Division, Provinces | GEF | 72200 | 72200 | 5,000 | | |
| Office Supplies | | | | | | | CC Division, Provinces | GEF | 72500 | 72500 | 5,000 | | |
| Monitoring visits | | | | | | | CC Division, Provinces | GEF, UNDP | | | 26,000 | | |
| In-country-Travel | | | | | | | UNDP, CC Division, Provinces | GEF | 71600 | 71600 | 23,000 | | |
| Communication | | | | | | | CC Division, Provinces | GEF | 72400 | 72400 | 8,465 | | |

| | | | | | | | |
|--|--|--|--|--|------------------|--------------------------------|----------------------------|
| Rental & Maintenance Premises | | | | | UNDP | 73100 | 26,000 |
| Maintenance of Vehicle/Generator including POL | | | | | GEF | 73400 | 32,465 |
| Print Production | | | | | GEF | 74,200 | 5,500 |
| Meetings/Seminars/Workshops | | | | | GEF | 72100 | 10,000 |
| Direct Project Cost | | | | | GEF | | 67,517 |
| Miscellaneous | | | | | | | 5,946.9 |
| | | | | | | Total Budget GEF/UNDP | 1,143,728 |
| Staff Salaries and Allowances (Federal/Punjab/Sindh?) | | | | | GoP Punjab Sindh | | 52,100 35,000 34,290 |
| Support to Provinces from Federal PSDP | | | | | GoP | | 148,190 |
| Operational cost to NCU by GoP | | | | | GoP | | 33,750 |
| Summary | | | | | | | |
| | | | | | | Total. GEF/UNDP | 1,143,728 |
| S. Total Federal/Provincial Governments | | | | | | | |
| | | | | | | Community Share in kind | 200,000 |
| | | | | | | Grand Total AWP 2016 | 2,193,728 |
| <p>*The Federal and Provincial allocations are subject to releases by the respective governments to the project authorities both in Federal and provinces. Furthermore, the allocations are based in the current Financial Year of Go Pakistan and provinces till June 30, 2016. Any further allocation by the Federal and provincial governments after June 30, 2016 will be communicated/ planned accordingly.</p> | | | | | | | |

AN



II. MONITORING PLAN 2016

(Include all monitoring and evaluation activities/events)

Project ID: 00087529 Project Title: Sustainable Land Management Programme to Combat Desertification in Pakistan

| Expected Results (Outcomes & Outputs) | Indicators | Baseline | Targets | Data Collection Plan | | | | Risks and Assumptions |
|--|--|---------------------------|------------------------------|--|-----------------------------------|--|--------------------|---|
| | | | | Source/Method of Collection | Schedule/Frequency | Responsible Staff | Resources (\$ USD) | |
| Obtained from the CPAP and project Results Frameworks) | Obtained from the CPAP and project Results Frameworks) | At the project start date | At the project year end date | Specific publication, evaluation, survey, field observation, interviews, etc | Monthly, quarterly, annually, etc | Staff member responsible for collecting and reporting data | \$ 1200 | Any risks or assumptions concerning data collection |
| CPAP Outcome 2 | | | | Verification of training programs | Quarterly | M&E Officer | | |
| CPAP Output | | | | network discussions | Monthly | Project Manager | | |

| Expected Results (Outcomes & Outputs) | Indicators | Baseline | Targets | Data Collection Plan | | | | |
|--|---|--|---|---|--------------------|--|--------------------|---|
| | | | | Source/Method of Collection | Schedule/Frequency | Responsible Staff | Resources (\$ USD) | Risks and Assumptions |
| Project Output 1: Strong enabling environment at national and provincial levels supports up-scaling of SLM practices | Indicators: 1.1 Extent to which provincial land use policies effectively mainstream and implement SLM principles based on NAP Not adequately: (up to 25%) Very partially: (26%-50%) Partially: (51%-75%) Largely: (75% and above) | Baseline: 1.1: Scale item: not adequately [No land use policies exist] | Targets: 1.1 Communication and outreach strategy/plan, knowledge management activity or advocacy material developed, SLM networks established | Strategy document | Quarterly | Staff member responsible for collecting and reporting data | 2200 | Federal ministries, PRSP secretariat, provincial line agencies and district governments are collaborating and receptive for introducing SLM practices |
| | 1.2. Extent to which key sectoral policies, especially agriculture and forests, address desertification issues based on SLM principles Scale: Not adequately: (up to 25%) Very partially: (26%-50%) Partially: (51%-75%) Largely: (75% and above) | 1.2: Scale item: not adequately [LD issues and SLM principles not integrated in provincial sectoral policies or frameworks] | 1.2 framework/structure, guidelines and implementation strategy/roadmap to mainstream LD issues and SLM principles prepared | Meeting minutes and Workshop activity reports | As agreed | NCU | 2200 | Political situation in provinces remains conducive for policy reforms. |

| Data Collection Plan | | | | | | | | |
|---------------------------------------|---|--|--|---|------------------------------------|-------------------|--------------------|---|
| Expected Results (Outcomes & Outputs) | Indicators | Baseline | Targets | Source/Method of Collection | Schedule/Frequency | Responsible Staff | Resources (\$ USD) | Risks and Assumptions |
| | <p>1.3. Extent to which National & Provincial Desertification Control Cells are functional</p> <p>Scale: No Desertification Control Cells at national or provincial level Desertification Control Cells established, but are not functional Desertification Control Cells established, and are partially functional Desertification Control Cells established, and are significantly functional Desertification Control Cells established, and are fully functional</p> | <p>1.3: Scale item: No Desertification Control Cells at national or provincial level [National & provincial coordination units established during SLMP Phase I]</p> | <p>1.3 One National and Four Provincial Coordination Units converted into respective Desertification Control Cells established by Yr 1</p> | <p>Functional DCCs activities</p> | <p>Quarterly report of the DCC</p> | <p>NCU</p> | <p>2200</p> | <p>Competing priorities at national and provincial levels may reduce political and financial support for SLM.</p> |
| | <p>1.4. Skills for up-scaling SLM enhanced through institutionalization of multi-tiered capacity building programme</p> <p>Scale:</p> | <p>1.4: Scale item: not adequately [No up scaling of SLM through institutionaliza</p> | <p>1.4 Strategic SLM training program developed and multi-tiered capacity building activities</p> | <p>Training workshop reports, Activity reports, On spot monitorin</p> | <p>Quarterly, activity based</p> | <p>NCU/PCU</p> | <p>2200</p> | <p>Possibly slow pace of achieving the conditions needed at the provincial and district levels in terms of a conducive environment for up</p> |

| Expected Results (Outcomes & Outputs) | Indicators | Baseline | Targets | Data Collection Plan | | | | |
|---------------------------------------|--|---|--|--|---------------------------|-------------------|-----------------------|--|
| | | | | Source/Method of Collection | Schedule/Frequency | Responsible Staff | Resources (\$ USD) | Risks and Assumptions |
| | <p>Not adequately: (up to 25%)</p> <p>Very partially: (26%-50%)</p> <p>Partially: (51%-75%)</p> <p>Largely: (75% and above)</p> | <p>tion of multi-tiered capacity building programme</p> | <p>conducted for 35 Professionals / managers 350 district village level master trainers – with in country and regional exchange visits</p> | g | | | scaling SLM practices | |
| | <p>1.5. Up-scaling is enhanced through a knowledge management and outreach programme for SLM</p> <p>Scale:</p> <p>Not adequately: (up to 25%)</p> <p>Very partially: (26%-50%)</p> <p>Partially: (51%-75%)</p> <p>Largely: (75% and above)</p> | <p>1.5 Scale item: Not adequately: (up to 25%)</p> <p>[No communication and outreach strategy/plan, knowledge management activity or advocacy material developed, No SLM networks established]</p> | <p>1.5 Communication strategy, advocacy material developed, knowledge management activity conducted and SLM network established</p> | Local service provider and NGOs activity site visits | Activity based, Quarterly | PCU/NCU | 2200 | Political and security situation in provinces remains conducive for exchange visits, may delay execution |

Handwritten signature

| Data Collection Plan | | | | | | | | |
|---|---|---|---|--|--|--|--------------------|---|
| Expected Results (Outcomes & Outputs) | Indicators | Baseline | Targets | Source/Method of Collection | Schedule/Frequency | Responsible Staff | Resources (\$ USD) | Risks and Assumptions |
| Output 2: Effective, targeted and adaptive implementation of SLM Land Use Planning & Decision Support System; | Indicators: 2.1. Number of integrated participatory district level SLM land use plans being implemented (developed with the participation of key sectoral representatives and NGOs/CBOs) and SLM Information System | Baseline: 2.1. No village or district land use plans available and No SLM information system operational Scale Item: Not adequately: (up to 25%) | Targets: 2.1 twenty two Village and 1 district land use plans prepared and Geo database for SLM activities Scale item 2: Very partially: (26%-50%) | District land use plans and meeting minutes Manuals and reports | Quarterly | GIS / M & E officer | 3000 | Provincial Governments are willing to develop and implement land use plans. Willingness to share Information and use of GIS outputs by the line agencies |
| Output 3: On-the-ground implementation of climate-resilient SLM activities is up-scaled across landscapes | Indicators: 3.1 Number of villages and households in target districts participating in SLM activities 3.2 Number of farms in target districts implementing soil and water conservation measures and on-farm management practices | Baseline: 3.1. 63 villages 2300 households 3.2. zero | Targets: 3.1. 2000 HHs in 43 villages actively participating in SLM activities through 28 Community Orgs [Punjab, Sind, Balochistan, KPK 5] 39 water ponds Construction of 27 Stock water ponds Construction of bunds on 3 new sites Sprinkler and drip | Village land use plans and agreements Activity reports Village land use plans and agreements | Quarterly Quarterly reports Activity based | Expert - LUP M & E Officer Expert - LUP M & E Officer | 3,250 3,250 | Provincial Governments are willing to develop and implement village land use plans Political situation remains conducive for enabling implementation of SLM activities |

| Expected Results (Outcomes & Outputs) | Indicators | Baseline | Targets | Data Collection Plan | | | | |
|---------------------------------------|------------|----------|--|-----------------------------|-----------------------------|-------------------|--------------------|-----------------------|
| | | | | Source/Method of Collection | Schedule/Frequency | Responsible Staff | Resources (\$ USD) | Risks and Assumptions |
| | | | Irrigation on 500 HA Construction of 20 embankments Dykes of 0.2252 million cubic 400km of shelterbelts established bund constructed over 07 hectares 5 spill ways on farmlands 7 water conveyance system gated structures on 03 critical points Hose-fed irrigation system established over 05 acres soil conservation structures Salaba band on 07 hectares 02 farmers nurseries (fruit trees) established Installation of Drip/mini-bubbler | Activity reports | reporting On site visits | | | |

| Data Collection Plan | | | | | | | | |
|---------------------------------------|--|----------------------|---|---|--------------------------------|-------------------|--------------------|---|
| Expected Results (Outcomes & Outputs) | Indicators | Baseline | Targets | Source/Method of Collection | Schedule/Frequency | Responsible Staff | Resources (\$ USD) | Risks and Assumptions |
| | | | irrigation systems on 05 acres fruit trees apricot, pomegranate pistachio & olive 10 Acres One olive extraction machine Drip irrigation for grapes in 05 acres | | | | | |
| | 3-3. The percentage (%) of livestock owners in target districts participating in agreements to restore degraded rangelands | 3-3. Two percent 2 % | 3-3 | Quarterly and activity reports Agreement documents | Quarterly, as and when require | M & E Officer | 3,250 | Climatic factors may disrupt SLM activities in project areas and cause disruptions that may alter government priorities |
| | 3-4. The % of households participating in agreements to restore degraded dry land forests | 3-4. One percent 1 % | 3-4. | Activity reports and agreements | Quarterly | NCU | 2250 | Community cooperation and acceptance of program staff, competing priorities of the communities |
| Total | | | | | | | 26,000 | |

III. Recruitment Plan 2016
Project ID: 00087529 Project Title: Sustainable Land Management Programme to Combat Desertification in Pakistan

| # | Post Title | National/International | Level of Post | Proforma Cost per year (US\$) | Responsible party (UNDP/EAD/P/PMU etc) | Contract Modality (TA/FTA/SC/NIMU/Govt) | Reporting to/ Supervisor | Duty Station | Contract Start Date | Contract End Date |
|----|--|------------------------|---------------|-------------------------------|--|---|--------------------------|--------------|---------------------|-------------------|
| 1. | No recruitment plan so far for this year | | | | | | | | | |
| | | | | | | | | | | |
| | | | | | | | | | | |
| | | | | | | | | | | |
| | | | | | | | | | | |
| | | | | | | | | | | |
| | | | | | | | | | | |
| | | | | | | | | | | |



| | | |
|--|--|--|
| | | |
| | | |
| | | |
| | | |
| | | |
| | | |
| | | |
| | | |
| | | |
| | | |
| | | |
| | | |
| | | |
| | | |
| | | |

IV. Procurement Plan 2016

(Include all local and international procurements valued at or above \$ 2,500 envisaged in AWP 2016 – including goods, assets, services and works)
Project ID:00087529 Project Title: Sustainable Land Management Programme to Combat Desertification in Pakistan

| # | Description | Type (good, service, works) | Estimated Budget (\$) | Responsible party (UNDP/EAD /IP/PMU etc) | Invitation Type (EFP, RFA, ITB, etc) | Announcement Target Date | Evaluation Target Date | Committee Review (CAP, RACP, etc) | Committee Review Target Date | Contract Start Date | Contract End Date | Responsible project staff |
|---|---|-----------------------------|-----------------------|--|--------------------------------------|--------------------------|------------------------|-----------------------------------|------------------------------|---------------------|-------------------|---------------------------|
| 1 | Consultant for provincial Land Use Policy framework/structure | Services /IC | 8500 | CCD/NCU | ADV | February 2016 | Quarter 2 | Procurement Committee | February 2016 | Feb 2016 | Quarter 2 | NPM/Te eh Advi: |
| 2 | Consultant for Drafting of strategy paper / guidelines for introduction of Payment for Ecosystem Services (PES) concept in Pakistan | Services /IC | 9000 | CCD/NCU | ADV | April 2016 | Quarter 3 | Procurement Committee | April 2016 | April 2016 | Quarter 3 | NPM/Te eh Advi: |
| 3 | Local Consultant for : Assessment study of NAP implementation at federal and provincial levels | Services /IC | 8,000 | CCD/NCU | ADV | April 2016 | Quarter 3 | Procurement Committee | April 2016 | April 2016 | Quarter 3 | NPM/Te eh Advi: |
| 4 | Local Consultant Annual 7th UNCCD national report prepared | Services /IC | 10,500 | CCD/NCU | ADV | Feb 2016 | Quarter 2 | Procurement Committee | March 2016 | March 2016 | Quarter 3 | NPM/Te eh Advi: |
| 5 | Consultant Guidelines for mainstreaming SLM in national and provincial policy legal and sectoral frameworks | Services /IC | 17,500 | CCD/NCU | ADV | Jan 2016 | Q 2 | Procurement Committee | Jan 2016 | Feb 2016 | Q 3 | NPM/Te eh Advi: |
| | Local Consultant to develop roadmap/strategy for implementation of guidelines | Services /IC | | CCD/NCU | ADV | July 2016 | Q 3 | Procurement Committee | July 2016 | Aug 2016 | Q 4 | NPM/Te eh Advi: |

| | | | | | | | | | | | | |
|----|--|---------------|--------|----------|-----|--------------|--------------|-----------------------|---------------|---------------|-----------|------------------|
| 7 | Consultant for development of Training Manuals | Services / IC | 8000 | CCD/NCU | RFP | Jan 2016 | Q 2 | Procurement Committee | Jan 2016 | Feb 2016 | Q 3 | NPM/Tech Advi: |
| 8 | Services for training on SLM for in service professionals covering federal and provincial | Services | 2,000 | UNDP/PMU | RFP | March 2016 | March 2016 | PPC | April 16 | May 2016 | May 2016 | NPM / Tech Advi: |
| 9 | Services for training of district level master trainers | Services | 8,000 | UNDP/PMU | RFP | March 2016 | March 2016 | PPC | April 2016 | May 2016 | May 2016 | NPM / Tech Advi: |
| 10 | Consultant for Communication strategy | Services | 10,000 | CCD/NCU | RFP | Feb 2016 | Quarter 2 | Procurement Committee | March 2016 | March 2016 | Quarter 2 | NPM / Tech Advi: |
| 11 | Consulting Firms for SLM corporate identity | Services | 6,000 | UNDP/PMU | RFP | January 2016 | January 2016 | Procurement Committee | February 2016 | February 2016 | Quarter 2 | NPM / Tech Advi: |
| 12 | Services for Short Documentary Film | Service | 8,000 | UNDP/PMU | RFP | July 2016 | July 2016 | PPC | July 2016 | Aug 2016 | Q 3 | NPM / Tech Advi: |
| 13 | Services for conducting awareness raising workshop/seminars | Service | 1500 | UNDP/PMU | RFP | April 2016 | Quarter 2 | PPC | April 2016 | April 2016 | Quarter 2 | NPM / Tech Advi: |
| 14 | Services for field demonstration | Service | 1500 | CCD/NCU | RFP | April 2016 | Quarter 2 | Procurement Committee | April 2016 | April 2016 | Quarter 2 | NPM / Tech Advi: |
| 15 | Services of firms for better SLM outreach via knowledge products: brochures, leaflets, fact sheets and a booklet | Service | 9000 | CCD/NCU | RFP | April 2016 | Quarter 2 | Procurement Committee | April 2016 | April 2016 | Quarter 3 | NPM / Tech Advi: |
| 16 | Consultation/Contractual services for ensuring Village and Households representation in SLM activities | Service | 6,000 | UNDP/PMU | RFP | January 2016 | February | PPC | February 2016 | February 2016 | Q 4 | NPM / Tech Advi: |

| | | | | | | | | | | | | |
|----|--|---------|--------|---------|-----|----------|---------------|-----------------------|---------------|------------|-----|----------------|
| 17 | Consultation / Contractual services for appropriate soil and water conservation measures and on-farm management practice activities | Service | 22,000 | CCD/NCU | RFP | Feb 2016 | February 2016 | Procurement Committee | February 2016 | March 2016 | Q 4 | NPM Tech Advi: |
| 18 | Consultation / Contractual services degraded rangelands are rehabilitated through improved management | Service | 20,000 | CCD/NCU | RFP | Feb 2016 | February 2016 | Procurement Committee | February 2016 | March 2016 | Q 4 | NPM Tech Advi: |
| 19 | Consultation / Contractual services Improved dry land forest and sand-dune management restores ecosystem services, and provides new livelihood opportunities | Service | 13,000 | CCD/NCU | RFP | Feb 2016 | February 2016 | Procurement Committee | February 2016 | March 2016 | Q 4 | NPM Tech Advi: |

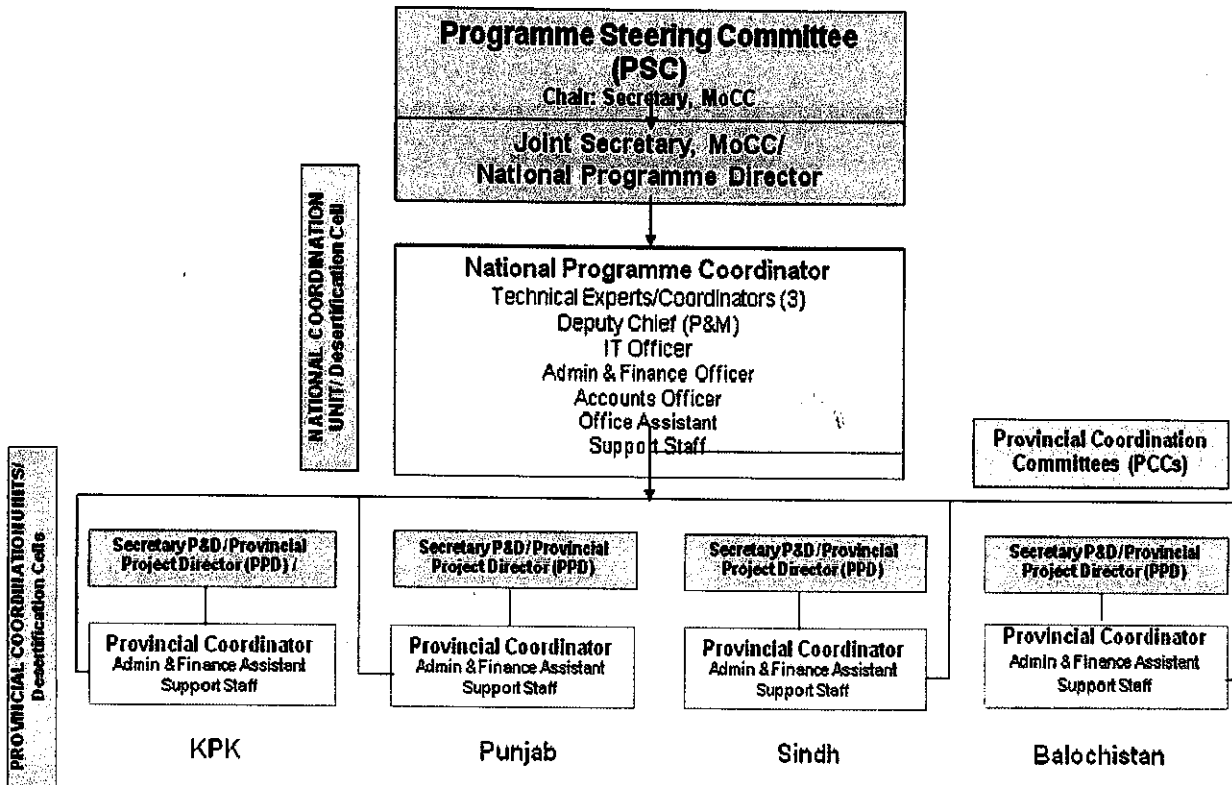
[Handwritten signature]

V. Management Arrangements

Explain the roles and responsibilities of the parties involved in managing the project.

Please refer to the Project Document – Deliverable Description to complete this component of the template.

Use the diagram below for the composition of the Project Board.



Suggested sub-headings in this component may include:

- results of capacity assessment of implementing partner
- UNDP Support Services (if any)
- collaborative arrangements with related projects (if any)
- prior obligations and prerequisites
- a brief description/summary of the inputs to be provided by all partners
- audit arrangements
- agreement on intellectual property rights and use of logo on the project's deliverables

VI. Planning, Monitoring and Reporting

The project will follow the following planning, monitoring and reporting cycle during the year. As necessary, add the target dates monitoring visits, spot checks, evaluations and other missions by donors or other stakeholders.

| Timeline /Target Date | Activity | Primary Responsibility |
|-----------------------|---|------------------------------|
| 20 January 2016 | Submit final Annual Progress Report 2015 to UNDP | NPD/ NPC |
| 16 February 2016 | Annual audit of the project | SMU-UNDP |
| 31 March 2016 | Quarterly Progress Reports, including: a) Report on project progress and financial delivery | NPC |
| 30 June 2016 | b) Update of Issue Log in Atlas (tracking and resolution of potential problems or requests for change) | |
| 30 September 2016 | c) Update of Risk Log (Reviewing of external environment that may affect project implementation) | |
| 15 July 2016 | Organize Project Technical Committee (Mid-year review of project progress) | NPD/ NPC |
| 1 November 2016 | Prepare draft Annual Work Plan 2017 and budget and present at UNDP annual retreat on 4-5 November 2016 | NPC |
| 23 November 2016 | Review of AWP for Quality assurance, alignment with CPAP and UNDP priorities, results orientation and resource availability | ACD UNDP and Program Officer |
| 30 November 2016 | Organize Project Steering Committee to: a) Review of project contribution to results and financial delivery 2016; b) Review and endorsement of AWP 2017 | NPD / NPC |
| 16 December 2016 | Submit signed AWP and, where applicable in NIM projects, Letter of Service, to UNDP for final review and signature by UNDP | NPD / NPC |
| 23 December 2016 | Approval of AWPs by UNDPs | ACD UNDP and Program Officer |
| 31 December 2016 | Review and provide feedback on the project APR to NPM | ACD UNDP and Program Officer |

VII. Legal Context

This document together with the CPAP signed by the Government and UNDP which is incorporated by reference, constitute together the instrument envisaged and defined in the Provisions to the Project attached hereto and forming an integral part hereof, as "the Project Document"

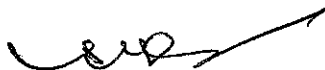
Alternative A [where the Implementing Partner is a government agency (NIM) or an NGO/IGO]

Consistent with the above Supplemental Provisions, the responsibility for the safety and security of the Implementing Partner and its personnel and property, and of UNDP's property in the Implementing Partner's custody, rests with the Implementing Partner. To this end, the Implementing Partner shall:

- a) put in place an appropriate security plan and maintain the security plan, taking into account the security situation in the country where the project is being carried;
- b) Assume all risks and liabilities related to the Implementing Partner's security, and the full implementation of the security plan.

UNDP reserves the right to verify whether such a plan is in place, and to suggest modifications to the plan when necessary. Failure to maintain and implement an appropriate security plan as required hereunder shall be deemed a breach of the Implementing Partner's obligations under this Project Document [and the Project Cooperation Agreement between UNDP and the Implementing Partner]¹.

The Implementing Partner agrees to undertake all reasonable efforts to ensure that none of the UNDP funds received pursuant to the Project Document are used to provide support to individuals or entities associated with terrorism and that the recipients of any amounts provided by UNDP hereunder do not appear on the list maintained by the Security Council Committee established pursuant to resolution 1267 (1999). The list can be accessed via http://www.un.org/sc/committees/1267/aq_sanctions_list.shtml. This provision must be included in all sub-contracts or sub-agreements entered into under/further to this Project Document.



¹ Use bracketed text only when IP is an NGO/IGO

OFFLINE RISK LOG

(see Deliverable Description for the Risk Log regarding its purpose and use)

| Project Title: Sustainable Land Management Programme to Combat Desertification in Pakistan | | Award ID: 00087529 | Date: |
|--|---|--|--|
| Output 1: Strong enabling environment at national and provincial levels supports up-scaling of SLM practices. | | | |
| Enter a brief description of the risk | When was the risk first identified | Environmental Financial Operational Organizational Political Regulatory Strategic Other | Describe the potential effect on the project if this risk were to occur Enter probability on a scale from 1 (low) to 5 (high) |
| | What actions have been taken/will be taken to counter this risk | Who has been appointed to keep an eye on this risk | Who submitted the risk |
| | When was the status of the risk last checked | e.g. dead, reducing, increasing, no change | |



| | | | | | | | | | |
|---|--|---|---|--|---|-----|-------------------|--|-----------|
| 1 | Lack of coordination between relevant institutions and ministries; | September 2015, at the start of project | Strategic Political Regulatory Organizational | P=2 This may lead to: Lack of agreement on scope of project, Delay in implementation of activities, and, Hinder the achievement of intended results. | The potential risks will be mitigated through: Formulation of Project Steering Committee to improve coordination and avoid conflicts among different stakeholders. Hiring of a dedicated PMO for project management. Establishment of a "SLMP regulation coordination office" at federal level to interact with PMO and coordinate with all governmental bodies involved in regulatory work. | NPD | Expert & CB PR | December 2015, at the start of project | No Change |
|---|--|---|---|--|---|-----|-------------------|--|-----------|

| | | | | | | | | | |
|----|--|---|---|---|---|---|-------------|--|-----------|
| 2. | Conflicting objectives of different ministries / stakeholders which may render the negotiation on an integrated regulation | September 2015, at the start of project | Strategic Political Regulatory Organizational | <p>P=2</p> <p>This may lead to:</p> <ul style="list-style-type: none"> Lack of agreement on scope of project, Delay in implementation of activities, and, Hinder the achievement of intended results. | <p>The potential risks will be mitigated through:</p> <ul style="list-style-type: none"> Formulation of Project Steering Committee to improve coordination and avoid conflicts among different stakeholders. Hiring of a dedicated PMO for project management. Establishment of a "SLMP regulation coordination office" at federal level to interact with PMO and coordinate with all governmental bodies involved in regulatory work. | NPD | Expert & CB | December 2015, at the start of project | No Change |
| 3 | Government willingness to accept and implement policy reforms mainstreaming SLM into sectoral policies Area | September 2015, at the start of project | Strategic Regulatory | <p>P=2</p> <p>As this risk may lead to disagreement among stakeholders on SLMP procedures</p> | <p>This potential risk will be mitigated and managed through:</p> <ul style="list-style-type: none"> Selection of the proper procedure and type of regulatory instruments for SLMP related legislation Application of change management tools and methods | National Project Manager Steering Committee | Expert & CB | December 2015, at the start of project | No Change |

| | | | | | | | | | |
|---|--|---|----------------------|---|---|---|----------------|--|-----------|
| 4 | Lack of understanding and commitment of relevant stakeholders. | September 2015, at the start of project | Strategic Regulatory | P=2 As this risk may lead to disagreement among stakeholders on SLMP procedures | This potential risk will be mitigated and managed through: Selection of the proper procedure and type of regulatory instruments for SLMP related legislation | National Project Manager Steering Committee | Expert PR & CB | December 2015, at the start of project | No Change |
| 4 | Lack of commitment in execution of road map for implementation of guidelines | November 2015, at the start of project | Operational | P=2 As this risk may lead to disagreement among stakeholders on SLMP procedures | Application of change management tools and methods | NPC | Expert PR & CB | December 2015, at the start of project | No Change |
| 5 | Training effectiveness limited or not properly assessed due to limited participation or limited quality control. | December 2015, at the start of project | Operational | P=2 As this risk may negatively impact the overall SLMP capacity building activities | This potential risk will be mitigated and managed through: Selection of the proper procedure and type of regulatory instruments for SLMP related legislation | NPC | Expert PR & CB | December 2015, at the start of project | No Change |

Handwritten signature

| | | | | | | | | | |
|---|--|--|----------------------------|--|--|-----|----------------|--|-----------|
| 6 | Enterprise may not be committed to send their personnel for training or workers not allowed / not willing to leave the job for the duration of the training. | December 2015, at the start of project | Organizational Operational | P=2 As this may damage project intentions to build capacity of stakeholders | Risk will be managed by: A ToT (Training of Trainers) approach for enterprises to optimize time spent by workers and enterprises staff in attending training. Making relevant training for enterprises | NPC | Expert PR & CB | December 2015, at the start of project | No Change |
| 7 | Frequent replacement of in-service personnel for training and workshops | December 2015, at the start of project | Organizational Operational | P=2 As this may damage project intentions to build capacity of stakeholders | Risk will be managed by: A ToT (Training of Trainers) approach for enterprises to optimize time spent by workers and enterprises staff in attending training. Making relevant training for enterprises | NPC | Expert PR & CB | December 2015, at the start of project | No Change |
| Output 2: Effective, targeted and adaptive implementation of SLM Land Use Planning & Decision Support System | | | | | | | | | |
| 1. | Stakeholders and interest groups not objectively identified because of government bias and political associations | December 2015, at the start of project | Strategic Operational | P=2 As this may damage project intentions to build capacity of stakeholders to manage and implement SLM | This potential risk will be mitigated and managed through: Identification of key stakeholder with the support of known governmental, NGOs, and industrial stakeholders. | NPC | Expert LUP | December 2015, at the start of project | No Change |



| Output 3: On-the-ground implementation of climate-resilient SLM activities is up-scaled across landscapes | | | | | | | | | |
|---|---|---|------------------------|--|--|-----|------------|--|-----------|
| | | | | | | | | | |
| 1 | Stakeholders and interest groups not objectively identified because of government bias and political associations | December 2015, at the start of project | Strategic Operational | P=2 As this may damage project intentions to build capacity of stakeholders to manage and implement SLM | This potential risk will be mitigated and managed through: Identification of key stakeholder with the support of known governmental, NGOs, and industrial stakeholders. | NPC | Expert LUP | December 2015, at the start of project | No Change |
| 2 | Safety issues in some areas of Pakistan | August 2015, at the start of project | External/ Political | P=2 As incidence of crime and terrorist activities might happen in project areas | Risk will be minimized by: Regularly coordinating with UN-DSS for adopting proper security measures by international/ national staff, Selecting safe areas for the project operations. | NPC | Expert LUP | December 2015, at the start of project | No Change |
| 3 | Communication and coordination challenges | September 2015, at the start of project | External/ Governmental | P=2 | Risk will be managed through: vertical and horizontal communication approach and use of Information Technologies (ICTs) to be promoted for effective and strengthened | NPC | Expert LUP | December 2015, at the start of project | No Change |

| | | | | | | | | | |
|---|---|---|-------------------------|---|---|--------------------------|--------------------|--|-----------|
| 4 | Risks associated with change as natural climatic issues such as natural calamities and disasters and unforeseen weather changes | September 2015, at the start of project | External/ Environmental | P=3 As this may further add into delay of activities | Disaster risk preparation and risk management | National Project Manager | Technical Director | December 2015, at the start of project | No Change |
|---|---|---|-------------------------|---|---|--------------------------|--------------------|--|-----------|

governance

